

## NHP300

### Pellet Durability Tester

- ♦ Fully Automatic
- ♦ Suitable for Animal Feed & Wood Pellets
- ♦ Samples and tests pellets from up to four production lines
- ♦ Repeatable Accuracy of  $\pm 0.1\%$
- ♦ Operated by Windows Software



#### Operation:

Automatic

#### Pellets Tested:

Feed & Wood

#### Sample Amount:

<170cm<sup>3</sup>

#### Function:

Testing during manufacture process

#### Used for:

Setting and Measuring Benchmark

#### Hole Diameter of Mesh Hopper:

2.5mm

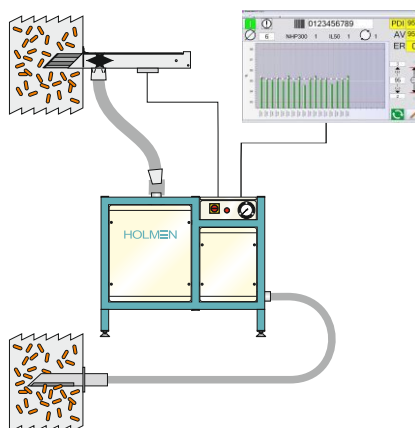
The NHP300 is our fully automatic pellet durability tester used for calculating the Pellet Durability Index (PDI) of feed and wood pellets by simulating pellets transportation environment from mill to trough.

The NHP300 extracts and tests samples from a production line and displays the results in the NHP300 Windows Control Software or in your existing mill management software. After the test, samples can be returned to the production line or discharged into a waste container.

By testing pellets during the production process, results can be used to control the quality of output by adjusting a mills settings at a time that will save energy and minimise waste.

Fitted with a 2.5mm diameter perforated hopper, the NHP300 is ideal for testing pellets with a diameter of 3-12mm.

## Save Energy, Reduce Waste, Lower Costs!



Samples are extracted from the process line using an in-line sampler (IL50 or IL55). The optimum extraction point is between the pellet press and cooler.

Samples are taken at set intervals and can be taken from up to four production lines into one NHP300.

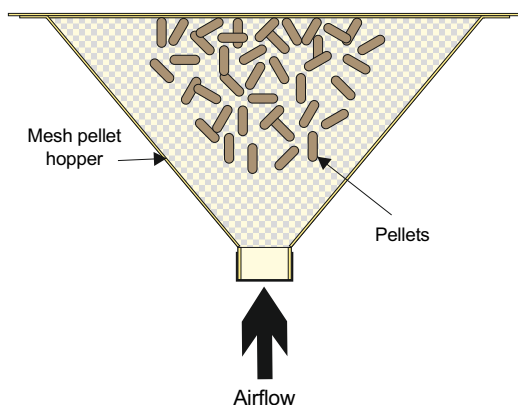
The NHP300 cools and de-dusts the pellets, weighs the sample, tests the pellets, weighs the remaining sample and calculates the PDI. It also has the ability to calculate the amount of Fines.

Results are sent to Windows Control Software (included) or can easily be integrated into your current mill management software.



## The Holmen Test

The Holmen Pellet Durability Test is a form of testing that is recognised worldwide. Four models are available in the range, providing a solution for any mill or facility.



- ◆ Pellets are placed into a perforated mesh hopper
- ◆ Air is blown into the bottom of the hopper at 70mBar, cascading the pellets into the air
- ◆ Pellets collide with each other and the sides of the hopper
- ◆ Fines filter through the hopper to a chamber below where they can be removed

## Holmen Range

NHP100



Portable / Manual  
Feed Pellets

NHP200



Desktop / Automatic  
Feed & Wood Pellets

NHP300



In-line / Automatic  
Feed & Wood Pellets

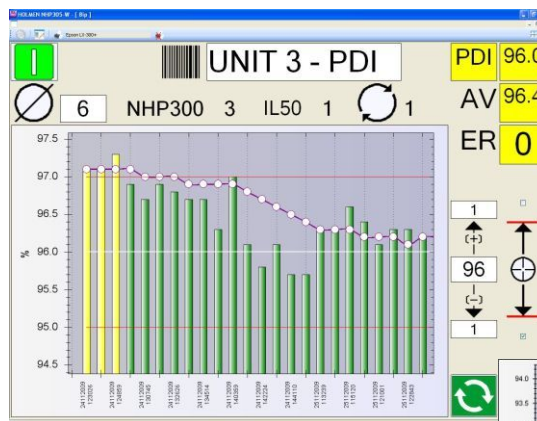
Ligno Tester



Portable / Manual  
Wood Pellets

## NHP300 Control Software

- ◆ Set ideal parameters
- ◆ Input tested pellet size and batch/reference number
- ◆ Displays results in bar graph format
- ◆ Provides average PDI or Fines result
- ◆ Visually flags and sounds an alarm when a result is outside the set parameter
- ◆ Data is saved in an SQL database.
- ◆ ASCII format allows NHP300 to be controlled from alternative software



Compatible with Windows XP, Vista, 7 & 8

### Typical NHP300 System Includes:

- NHP300
- Control Software
- IL50/55 Sampler
- Transfer Hose
- Power and Signal Cables
- Pressure Gauge Calibration Certificate
- Installation and Operation Manual

### NHP300 Unit Size:

Depth: 440mm  
Width: 915mm  
Height: 675mm  
Weight: 92kg  
400V, 3 Phase, Earth and Neutral, 50/60 Hz, 2.2 KW

## Distributed Worldwide